

**Clermycine<sup>®</sup> Anti-Acne Cream**  
2% Erythromycin

**Patient and Healthcare Professional Information**

**Please read this entire leaflet before using this medication**

If you require any further information, please ask your doctor or pharmacist. This medication has been prescribed for you. Do not give this medication to anyone else as it may not be appropriate for him/her even if he/she shows the same symptoms as you do. **Keep this leaflet as you may need to read it again**

**Medicine classification:** Prescription medicine

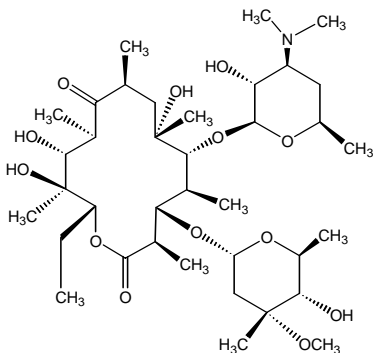
**Composition:** 2% Erythromycin

**Pharmacotherapeutic Class:** Topical antibiotic

**What is Clermycine<sup>®</sup> cream and when should it be used?**

Clermycine<sup>®</sup> anti-acne cream contains the antibiotic, erythromycin in a water soluble cream base. Clermycine<sup>®</sup> cream was developed for the treatment of acne but can also be used to treat other minor bacterial skin infections.

**Chemical Name and Structure:** Erythromycin is a macrolide antibiotic which has a molecular formula of  $C_{37}H_{67}NO_{13}$  with IUPAC name of 6-[4-dimethylamino-3-hydroxy-6-methyl-oxan-2-yl]oxy-14-ethyl-7,12,13-trihydroxy-4-[5-hydroxy-4-methoxy-4,6-dimethyl-oxan-2-yl]oxy-3,5,7,9,11,13-hexamethyl-1-oxacyclotetradecane-2,10-dione. Its antimicrobial spectrum is slightly wider than that of penicillin. Erythromycin has a molecular weight of 733.93g/mol and the following structure:



**Why should I not use this medication?** Clermycine<sup>®</sup> should not be used by anyone who is allergic to erythromycin or any of the ingredients. Use of the product should be discontinued if hypersensitivity to any of the ingredients is noted.

**How does it work?** Acne is caused by the effects of hormones on the pilosebaceous unit consisting of a hair follicle, sebaceous gland and a hair. The follicle becomes obstructed and an overgrowth of normal skin bacteria, *Propionibacterium acnes*, causes destruction of the lining of the follicle. This process allows follicular material to enter the dermis causing infection and inflammation of the pores. Topical antibiotics, such as erythromycin, work by killing the *Propionibacterium acnes* bacteria. This not only helps reduce the small infections in the pores, but also indirectly keeps the pores open.

**How well does it work?** It works slowly to treat and prevent acne. It takes 3 to 4 weeks to see improvement; however, complete treatment of acne may take up to 8 to 12 weeks

before you see full improvement and in instances of recurrence, the period of treatment may be prolonged further. If you stop using Erythromycin too soon, your symptoms may return.

**How do I use this medication?** Unless otherwise directed by your doctor, Clermycine<sup>®</sup> should be applied twice a day to all acne prone areas. Before applying this medicine, thoroughly wash the affected area with warm water and soap, rinse well and pat dry. Apply the cream to the whole area usually affected by acne, not just to the pimples themselves. Avoid washing the affected area too much. This may dry your skin and make your acne worse. Avoid contact with your eyes, nose, and mouth or on other mucous membranes. If it does get into the eyes wash them out immediately with large amounts of cool tap water. It is important that you do not miss any doses. The dose of topical erythromycin will be different for different patients so follow your doctor's orders. You can use cosmetics (make up) while using the cream, however it is best to use only water based cosmetics

**Will there be adverse effects?** Topical erythromycin is generally well tolerated but may cause irritation in some individuals

**Can I use this medication when pregnant or breastfeeding?**

Reproduction studies performed in rats and rabbits revealed no evidence of impaired fertility or harm to the fetus due to erythromycin and so Clermycine<sup>®</sup> is safe for use by pregnant women. Topical preparations of erythromycin have not been reported to cause problems in nursing babies but erythromycin does get into breast milk if it is swallowed or ingested and your doctor may advise you to discontinue breastfeeding your baby until your treatment with this medication is finished.

**Overdosage:** There is no information available on overdosage of topical erythromycin

**Package Quantities:** Cream 2%, 20g

**Storage conditions:** All Clermycine<sup>®</sup> topical preparations should be stored below 30 °c

**Manufactured By:** LaGray Chemical Company, Nsawam, Ghana.

**Manufactured For:** LaGray Chemical Company, Inc, Chicago, IL, United States



February 2007